

SILICON TELEVISION

QUICK START USER'S GUIDE

SYSTEM REQUIREMENTS

To use Silicon Television, you need:

- A Macintosh® that is QuickTime-compatible, this includes the LC's, SE/30, all Macintosh II models (II, IICx, IICi, etc...), Performas, Quadras, PowerMacs and PowerBooks.
- A hard-disk drive
- Apple System software version 7.0 or later and 4MB RAM.
- QuickTime, version 1.5 or later (included in this package)

NOTE: Silicon Television will work on any of the above Macintosh computers running System 7.0 or greater, but a color Macintosh is recommended. Also the more free space you have on your hard drive the more movies you will be able to enjoy.

Before doing anything else, make a backup copy of your Silicon Television Program disk.

INSTALLING THE SILICON TELEVISION PROGRAM

1. Very Important! Please make sure you have installed QuickTime™ prior to using Silicon Television.
2. Insert the Roses CD-ROM. Drag the Silicon Television folder to your hard disk.
3. Drag “Silicon Television Movies” to the same hard disk as Silicon Television. Do not rename “Silicon Television Movies” and make sure it remains outside of any other folders.
4. Open your hard disk and open the Silicon Television folder.
5. Double-click the Silicon Television icon. You will be asked to register your copy. After you have entered your name and company click Continue...
6. Click the “Install” button.
7. Silicon Television will confirm installation with a message window. Close the window.
8. Under the File menu select Silicon Television Settings... Move through the scrollable list until Video Player comes into view. Select Video Player.
9. Adjust the Sound slider to medium.
10. Select Play from the File menu to see the QuickTime movies.

MOVIE FOLDER SELECTION FROM ROSES CD

1. Make sure Video Player is selected in the scrollable list of fader modules.
2. Click the Setup... button and the User Control window appears.

On the left you will see the controls for Movie Selection divided into three radio buttons; two for playback of movie folders and one for playback of single movie files.

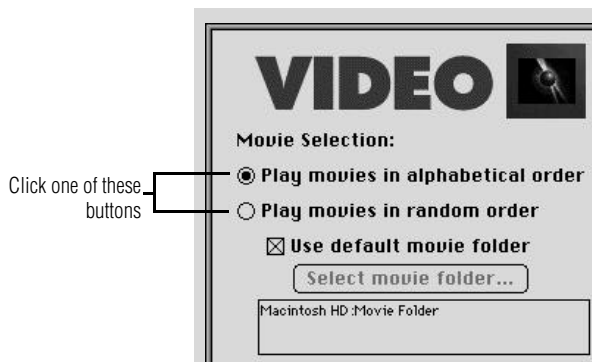


Figure 6-1 Using the default folder

3. Click one of the two radio buttons; “Play movies in alphabetical order” or “Play movies in random order” to activate the movie folder selection controls. Notice when the Use default movie folder box is checked, the “Select movie folder...” button is dimmed.

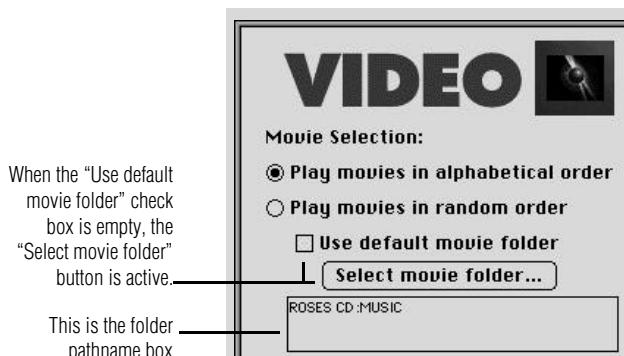


Figure 6-2 Selecting a movie folder

4. Click the “Use default movie folder” box to de-select it. Notice the “Select movie folder...” button becomes active. Also notice that the pathname box is now empty. This is because no movie folder is currently selected. Click the “Select movie folder...” button and the Select movie folder directory dialog box will appear.

MOVIE FOLDER SELECTION

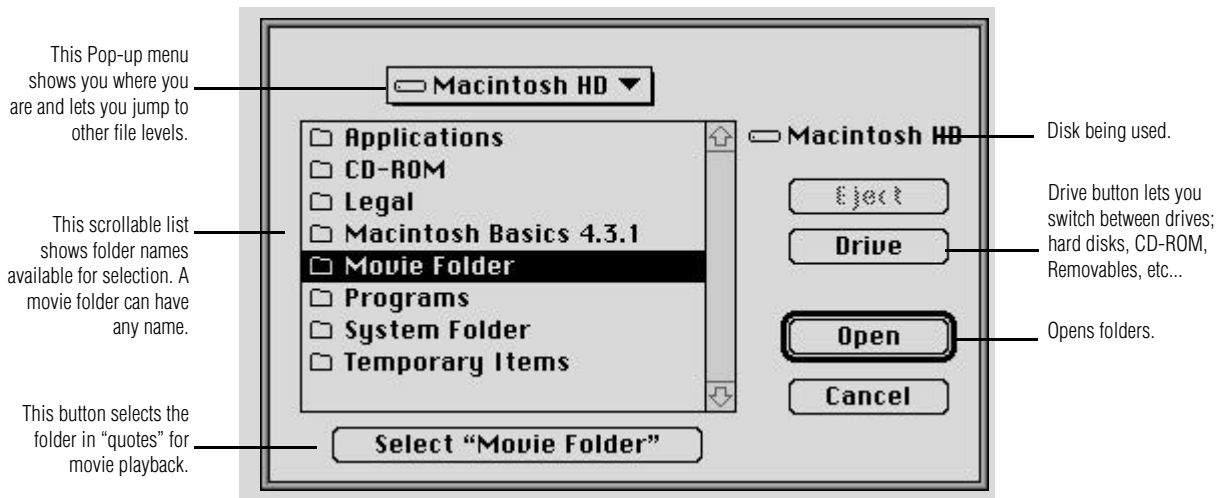


Figure 7-1 The Select movie folder directory dialog box

5. Click the Drive button.
6. Double click QuickClips in the scrollable list to access the CD.
7. Double click the folder labeled Video to open it.
8. Click Business Advice in the scrollable list once to highlight this folder. Click the Select "Business Advice" button to confirm your selection.
9. Click OK in the Setup window. Select Play from the File menu.

You can use the movie folder directory dialog to select any folder with any name on any drive. But it will only play back movies if there are movies in the folder you select. Otherwise Silicon Television will tell you that it could not find a movie file.

PLAYING SINGLE MOVIE FILES

In addition to playing folders full of movies, Silicon Television also lets you play individual movie files. To learn how this is done please return to the Video Player Setup window.

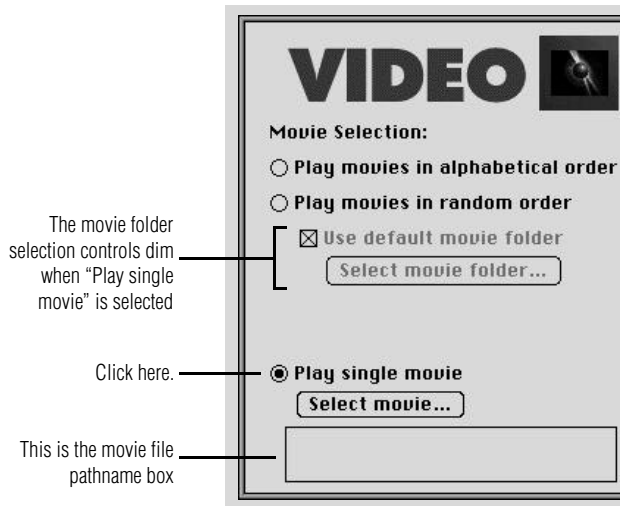


Figure 8-1 Selecting single movies

1. Click the third radio button labeled "Play single movie..." Notice the Select movie... button at the bottom left of the window becomes active and the movie folder selection controls dim.
2. Click the Select movie... button to access the Movie File directory dialog box shown below.

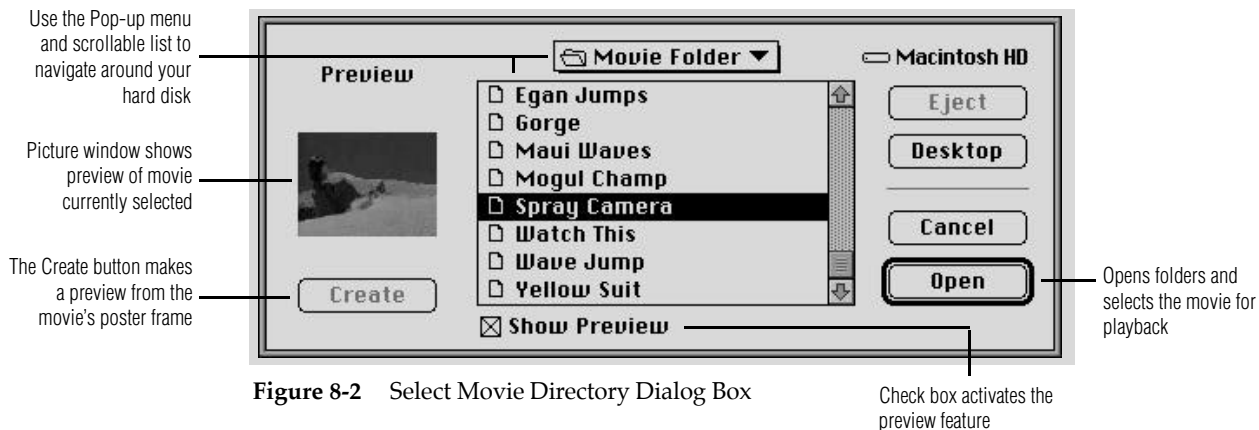


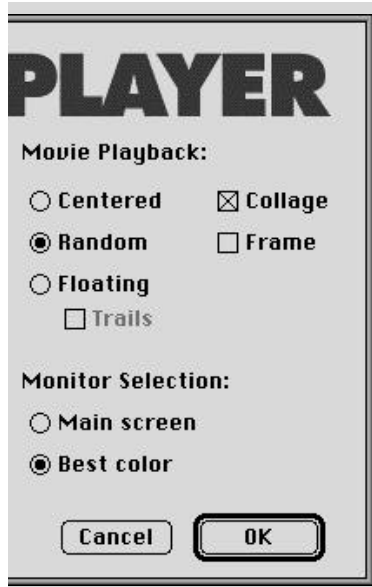
Figure 8-2 Select Movie Directory Dialog Box

3. You can use the directory dialog box above to find and choose any movie on any drive connected to your Mac. Find the folder "Movie Folder" on your hard disk, open it, then select a movie for playback by double-clicking on its name or selecting the name and clicking open button.

MOVIE PLAYBACK CONTROLS

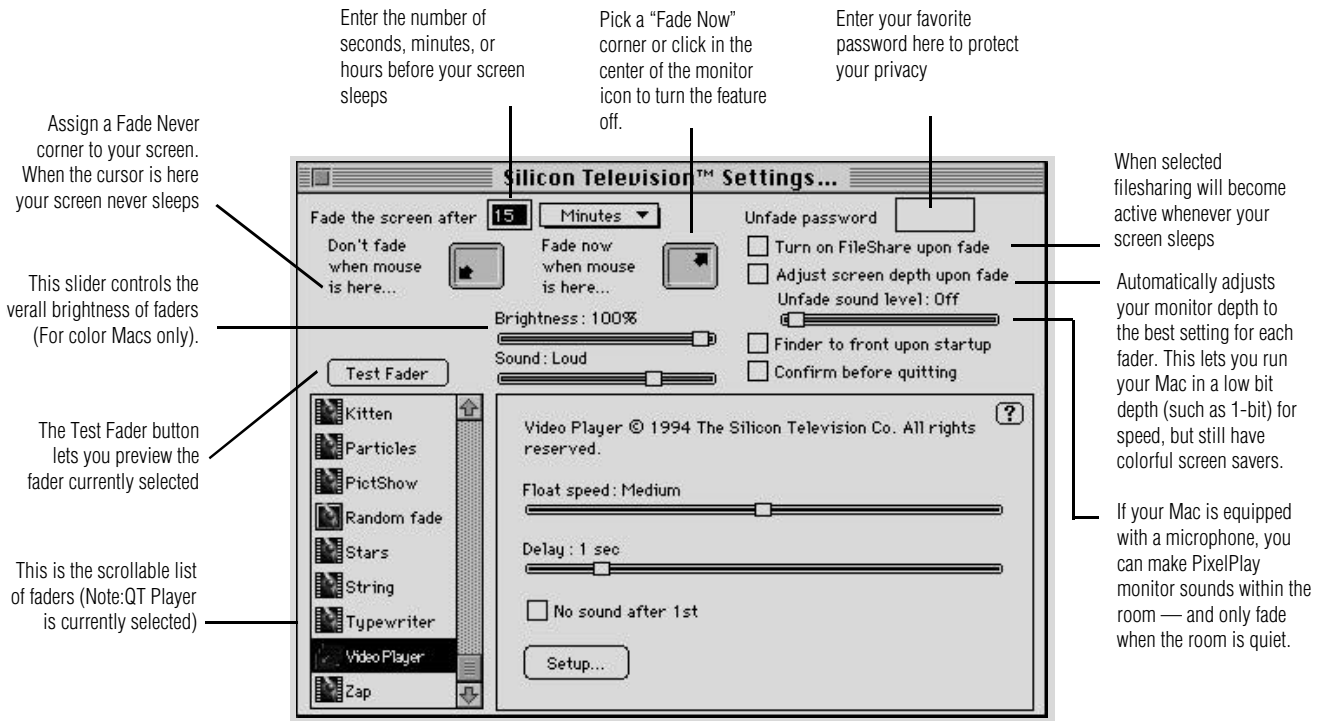
While the movie selection controls let you vary which movies you watch, the movie playback controls are where you can experiment until you find what appeals to you visually. Centered, random, or floating, see which one you like the best and then change it when you're ready for something new.

The Movie Playback controls are on the right side of the window. Here's what they do.



- Centered**- Plays movies in the center of the screen.
- Random**- When selected, movies play back at random locations on all over your screen.
- Floating**- This option makes the movies float while they play back moving each time the frame changes.
- Floating with Trails**- Leaves the previous frame behind as a trail and automatically activates the Collage feature.
- Collage** - Use with Random and Floating. Collage leaves the last frame of each movie on the screen for 3 minutes while each successive movie plays.
- Frame** - Places a 3D frame around movies. The frame automatically adjusts to the size of the movie. Turn this feature off when playing movies bigger than 320x240 pixels.
- Main screen or best color** - These choices are for multiple monitor systems. Main screen makes movies play on the screen that has the menu bar. Best color makes movies play on whichever screen has the best color. (8-bit, 24-bit, etc.)

SILICON TELEVISION SCREEN SAVER SETTINGS REFERENCE



- A** Silicon Television will automatically launch after a user-specified period of time of inactivity. Silicon Television considers typing, mouse clicks, mouse motion, disk insertion, and modifier keys to be activity. Silicon Television will attempt to not fade when a program is calculating, or doing something CPU intensive. You can make Silicon Television fade on demand by moving the mouse into the Fade Now corner or selecting Play from the File menu.
- A** If you have installed Silicon Television properly, an alias to the program will be placed in your startup items folder. Everytime you power-up you Macintosh, Silicon Television will startup. Check the Finder to front upon startup box if you want Silicon Television to be in the background upon startup.

COMMONLY ASKED QUESTIONS

WHERE CAN I GET MORE MOVIES?

- If you have access to video digitizing hardware and software you can make your own movies.
- Use the QuickClips CD or use Movie Recorder from the QuickTime Starter Kit and video digitizing hardware to make your own movies.
- You can also purchase QuickTime content CD-ROM's from other third party developers.
- Or, you can call AVEX @ 415-857-0893 for more information on title availability.

WHICH FADERS ARE BEST DURING PRINTING AND DOWNLOADS?

- Blank Screen and Clock are the best.
- The remaining faders take CPU time if they can get it – but give it up if another activity needs it. For most users, none of them will cause any trouble.

HOW MUCH MEMORY DOES SILICON TELEVISION REQUIRE?

- Silicon Television will function in as little as 42K of RAM. For playback of 320x240 QuickTime movies we recommend a setting of 150K.